

SUNSHINE

THE MAGAZINE OF METHODIST CHILDREN'S HOME | SUMMER 2022



Methodist Children's Home
Offering Hope Since 1890



MCH RECEIVES NATIONAL REACCREDITATION FROM COA

For the 10th consecutive time since 1986, Methodist Children's Home (MCH) has officially earned national reaccreditation from the Council on Accreditation (COA), announced MCH President and CEO Trey Oakley.

"MCH was evaluated on more than 800 standards which examined all areas of our operations, including governance, ethics, policies and procedures, financial practices, fundraising, programs and services, risk management, human resources, and more," Oakley said, adding praise to the efforts of MCH staff across the organization who contributed to the reaccreditation process.

"This distinction is a testimony of the unwavering commitment of our employees and Board of Directors to the thousands of children, youth and families served across Texas and New Mexico," he said. "Many employees spent time collecting evidence, taking surveys, participating in interviews and contributing in other ways during the COA self-study and site visit."

Based in New York, COA is an independent nonprofit accreditor of the full continuum of community-based behavioral healthcare and social service organizations in the United States and Canada. COA accredits more than 2,000 private and public organizations worldwide. MCH has been successfully reaccredited by COA every four years since its first accreditation in 1986, Oakley noted.

According to COA, organizational accreditation demonstrates accountability in the management of resources, sets standardized best-practice thresholds for service and administration, and increases organizational capacity and accountability by creating a framework for ongoing quality improvement.

According to Oakley, "This designation demonstrates to our supporters and partners that MCH is a worthy investment. We hold ourselves accountable to all we serve by creating a framework for quality improvement, following best practices and setting high performance standards we meet through our delivery of services each day."

PRESIDENT'S PERSPECTIVE



Trey Oakley, President and CEO

I am grateful for the many individuals, churches and organizations that support Methodist Children's Home (MCH). Because so many believe in our vision to empower all we serve to experience life to the fullest, we are able to annually serve more than 10,000 children, youth and families across Texas and New Mexico

through our transformational services, equipping and expertise.

Summer is always a fun time at MCH. Our youth in residential care and families served through MCH Family Outreach have many opportunities for activities, mission trips, camps, and community outreach events. I know you will enjoy seeing pictures in this issue of Sunshine magazine that highlight our summer events.

I am also pleased to share in this issue other ways MCH continues to make an impact in the communities we serve. In times of crisis and financial uncertainty, MCH is not passively waiting for things to change. For example, you will read about our pilot program to offer free counseling services through MCH Family Outreach. We are committed to pressing into areas of need because we know there are so many within our communities desperate for a touch of healing, understanding and hope.

We open this magazine with the announcement on the facing page about this ministry receiving reaccreditation from COA – the Council On Accreditation. This designation means a great deal to us because of the message it sends to our benefactors and potential supporters. MCH is committed to transparency and desires to set the standard for professional excellence. The accreditation process enabled our entire organization to evaluate our operations based on more than 800 best practice standards and make improvements.

Your friendship and support for this ministry makes our work possible. God has been gracious to MCH and I am confident great days are ahead.

CONTENTS

- 2 **A Family's Journey**
- 6 **MCH Introduces Free Professional Counseling**
- 9 **Youth Profile – Ei'Terrian: An Emerging Leader**
- 10 **Summer at MCH**
- 12 **Celebrating Our Graduates**
- 14 **Transition Services Profile – Leona: Determined to Go Far**
- 15 **Development News**
- 16 **News & Notes**
- 18 **Recognition of Gifts to MCH**

EXECUTIVE LEADERSHIP TEAM

- Trey Oakley**, *President and CEO*
- Lyle Mason**, *Vice President for Development*
- Julie Mitchell**, *Vice President for Finance*
- Bryan Mize**, *Vice President for Strategic Initiatives*
- Traci Wagner**, *Vice President for Programs*
- Denise Ondrey**, *Executive Assistant to the President*
- Ahmad Washington**, *Lead Advisor to the President*

EDITORIAL STAFF

- Russell Rankin**, *Director of Public Relations*
- Sarah Bellafiore**, *Public Relations Officer*
- Anna Jordan**, *Graphic Designer*



Left to right: Sam, Joshua and Lillian enjoy a day on the campus of Baylor University, where their dad, works.



A Family's Journey

BY RUSSELL RANKIN

Muffled giggles coming from the Bryants' playroom fall silent when Hannah Osborne starts her countdown outside the door.

"Three, two, one...ready or not, here I come!" The routine usually starts when Osborne arrives at the house and rings the doorbell. The children tell their mother, Kelly, not to open the front door until they are hidden. Once she finds and tags 6-year-old Lillian, 7-year-old Sam, and 11-year-old Joshua creatively tucked into corners and behind furniture in the playroom, the children are content to allow their parents to spend time with Osborne, a case manager from MCH Family Outreach in Waco.

Mark and Kelly Bryant married in 2010. Their relationship started online while Mark lived in Kosovo and worked with university students and Kelly worked with students in China.

"We talked about adoption when we were dating," Mark said. "We knew that about ourselves early in our relationship. I remember walking down the street with her in China when I visited her and I asked her if she had ever thought about adoption. She was right

there with 'Oh, yes, a little girl.' We knew we had to pay attention to our own stories and experiences and would adopt internationally."

The family's growth started with Joshua, who was born in 2011 and lived in a group foster home in China. The couple gave birth to Sam in January 2015 and then adopted Lillian, born in August 2015, from an orphanage in China.

"Sam and Lillian have always measured within an inch and a pound of each other, so we call them our twins," Kelly said, smiling at her children from different backgrounds.

The Bryants were aware of potential challenges that could arise from adoption and did a good bit of research into attachment issues and trauma-informed care. They said Joshua's and Lillian's growth progressed differently due to their varied circumstances.

"Joshua lived in a foster home with parent figures, which gave much more of a family dynamic," Kelly described. "Lillian lived her first year in an orphanage where she didn't really receive much attachment to

adults." As the children grew, tension among them would sometimes boil over. Additionally, one had a difficult time accepting or showing affection to Mark due to attachment issues.

With the onset of the COVID-19 pandemic, Kelly and Mark began to notice an increase in the relational struggles between their children.

"Being together 24/7 because of the pandemic, there was a step up in intensity," Kelly said. "There wasn't enough buffer between the kids. They were constantly butting heads; the relational struggles were pronounced. In my opinion, they were poking at each other's core wounds from adoption."

As Kelly looked for resources the family could tap into, a friend suggested contacting MCH Family Outreach in Waco.

"Kelly did a lot of research looking at options for clinical counseling and learned about MCH," Mark said. "We talked with Hannah on the phone and were surprised to learn about all the services MCH offered, especially framed in TBRI, because that's what we were already using."

Osborne encountered a family ready and willing to learn and grow.

"I remember leaving the first few meetings with the Bryants so excited about how eager they were to learn, talk about their parenting and engage in reflective work," Osborne said. "They had a background in Trust-Based Relational Intervention (TBRI), so we worked on tailoring therapy for their family needs."

Mark said Osborne's methods were less like teaching or instruction and more of a relational exchange.

"The approach Hannah used is great in that all three kids even had a role," Mark said. "I tend to be a linear thinker, so we identified what we wanted to do and set goals. Hannah's approach was well thought out and methodical, supplemented by great resources for us to learn from and use as a family."

"We're very open with people, but having someone 'looking under the hood' and walking with us through things has been so good," Kelly described. "Hannah worked with us on how to diffuse



▲
Waco Outreach Case Manager Hannah Osborne meets with the Bryants in their home.

tense situations when the kids are at each other. The meetings felt very natural – we touched base, checked feelings and worked our timeline.”

Osborne utilized activities engaging the whole family, which led to heartwarming breakthroughs.

“The kids have normal sibling challenges, but it’s heightened because of brain and attachment issues,” Osborne said. “We did nurture group activities together and spent time doing activities and playing games. We also had intentional practice of relating well in calm moments and introduced regulating techniques for the tense situations. We work on sibling interactions but also growing heart connections with parents.”

Through the activities, Mark and Kelly saw their child who struggled with attachment warm to receiving hugs from Mark, which has grown to bedtime stories and even singing together.

“As we worked on that, it was beautiful to see our child begin to show affection toward me and initiate hugs,” Mark said. “I’ve also noticed growth between the kids – they might not always start and end well, but there’s more moments of them playing well together and being intentional about the things we’ve learned.

“The great reminder behind all this is we are learning what is going on with our kids and what

should be going on developmentally and how it might be impacted by adoption and trauma,” he added. “It’s good to understand how and why someone might be acting out.”

In Waco, adoptive families are further strengthened by adoption support groups for parents. A group for adoptive mothers meets biweekly at a public setting where children can play together and mothers have time to connect and dialog with one another to share stories, encourage and support each other.

Marissa Smith, a program administrator with MCH Family Outreach, said each of the outreach offices across Texas and New Mexico can tailor case management to meet the unique needs of adoptive families.

“All of our 13 offices are equipped to offer post-adoption services through Family Solutions and even

Gap programming,” Smith said. The Gap program assists grandparents and other relatives taking care of children in the absence of parents.

Kelly said they see more instances of their children showing kindness and generosity to each other.

“We praise and celebrate those moments,” she said, adding that the growth her family has experienced has left her “evangelistic about the resources MCH has provided. It’s been such a blessing to us.”

.....
*“The great reminder behind
all this is we are learning
what is going on with our kids
and what should be going on
developmentally
and how it might be impacted by
adoption and trauma.”*
.....



“WE BELIEVE COST SHOULD NOT BE A BARRIER TO FAMILIES SEEKING HIGH-QUALITY, TRAUMA-INFORMED COUNSELING.”

MCH INTRODUCES FREE PROFESSIONAL COUNSELING

BY RUSSELL RANKIN

Methodist Children’s Home launched a pilot program in July to provide free professional counseling services for individuals and families in the community. The pilot project is initially being offered through the MCH Family Outreach offices in Waco and Abilene.

According to Traci Wagner, vice president for programs at MCH, offering professional counseling is a way for MCH to provide a much-needed resource to the community.

“We believe cost should not be a barrier to families seeking high-quality, trauma-informed counseling,” Wagner said. “For decades we have served residents of the MCH Waco campus, the Boys Ranch and their families through counseling support. As an agency that believes in and implements trauma-informed care in all our programs, we are excited to pilot counseling services through our Waco and Abilene MCH Family Outreach offices as a resource and support for individuals and families in those communities.”

Counseling will be given by MCH Family Outreach staff who hold a master’s degree, or

someone who is currently in clinical supervision or holds a clinical license (LCSW, LMFT, LPC). Clinical supervision and oversight will be given by the MCH program administrators who carry a clinical supervision license (LCSW-S or LPC-S).

Available modalities will include, but not be limited to, trauma-focused cognitive behavioral therapy (CBT), motivational interviewing, Trust-Based Relational Intervention (TBRI), eye movement desensitization and reprocessing (EMDR) therapy, and solution-focused brief therapy (SFBT).

“Our hope is that as families seek counseling support at MCH, they will bridge into some of our other transformative services such as case management or caregiver empowerment groups for ongoing personal and family success and growth,” Wagner said.

Monique Hoskins, director of Family Outreach in Waco, said while some clients may be already connected through other MCH case management services, she anticipates the program benefitting a new demographic in the community seeking professional counseling.

“We regularly serve people through our programs who also have a big need for individual counseling,” she said. “They want to be the best parents and caregivers they can be, but they need someone to help them dive further into issues and experience inner healing for themselves.

“When someone is ready to sign up for counseling, you want them to be able to experience healing. There is nothing like being hurt and not knowing what to do about it.”

Now, the door for counseling services at MCH is “not just open, but free of charge,” Hoskins said.

Abilene is an ideal location for the counseling pilot project, described Maggie Brennan, director of Family Outreach in Abilene.

“The Abilene nonprofit community is very collaborative,” Brennan said. “I anticipate receiving a lot of referrals for our counseling services from other organizations. There is a high demand for professional counseling in Abilene. Even before announcing our services, word was getting out and we were getting phone calls for appointments.”

ABILENE OUTREACH STAFF



WACO OUTREACH STAFF



Like Waco, Brennan said existing MCH clients needing additional counseling beyond case management are served, but the program is already making an impact on the community. Brennan knows the program will add value to the other community services and professional counselors supporting children and families.

"Looking for an opening can be a barrier and discouragement for families in our community, especially foster families needing to find consistent counseling services for their foster children," Brennan said. "Having a free resource at MCH is a huge blessing for them."

Brooke Davilla, associate vice president for programs at MCH, described the pilot project as being in line with the intentional direction of the organization. MCH Family Outreach offices are located in 13 communities around Texas and New Mexico. Outreach services include parent education, caregiver empowerment groups, Family Solutions, and the Gap program, which

assists grandparents and other relatives taking care of children in the absence of parents. Building from a culture of learning at MCH, staff in outreach offices played a key role in developing the counseling pilot program from an idea to implementation.

"As the landscape of our communities and child welfare changes, we are committed to remaining focused and flexible in our programming at MCH," Davilla said. "In all our outreach offices we provide intentional and empowerment-based case management that supports families cultivating positive and long-term changes. We have seen incredible changes in families due to the level of intentionality taken by our case management."

"We also understand that not all families are ready for that level of engagement seen in our prevention services. Through this program, we will be able to engage with the community in a new and much-needed way through high-quality, trauma-informed professional counseling."

**THE ABILENE OUTREACH
OFFICE IS LOCATED AT
1 VILLAGE DR., SUITE 102
ABILENE, TX 79606
FOR MORE INFORMATION,
CALL (325) 672-9398**

**THE WACO FAMILY OUTREACH
OFFICE IS LOCATED AT
524 W. WACO DR.
WACO, TX 76701
FOR MORE INFORMATION
CALL (254) 750-1263**

YOUTH PROFILE

EI'TERRIAN

AN EMERGING LEADER

BY ANNA JORDAN

It's not surprising those around Ei'Terrian, or "ET," describe his personality as infectious. His charisma and humor are noticeable within minutes of speaking with him.

As many do when asked about ET, Case Manager Destini Swain spoke about his enthusiasm and influence on those around him.

"ET is very outgoing and enjoys spending time with his peers and staff," Swain said. "He's a strong person who advocates for others and stands up for what's right. ET sees the good in people and is willing to help those who need it."

A dedicated athlete and subtle comedian, the 15-year-old came to the MCH Boys Ranch in January 2022. Even though many characterize him as a people-person, ET said he wasn't expecting to find community so quickly.

"Coming to live with multiple people I didn't know at all, I thought it was going to be really weird," he said. "It was the opposite of what I thought. As soon as I got in they introduced me like I was family. I was not expecting that at all."

ET credits the staff for treating him like family upon his arrival and helping him learn routines.

"Being new here, there are a lot of different things I'm not used to doing," he said. "Staff helped me and guided me along as I got used to living at MCH."

Home Parent Gregory Atterberry connected with ET early and has observed him evolving and adapting to patterns at MCH. Atterberry considers this a pivotal growth experience for ET.

"He's opening up and learning to be comfortable being around different cultures and different people," Atterberry said. "I think the true ET is coming out. He's become more of a leader."

Having played football in college, Atterberry and ET bonded over their shared love of the game. Atterberry encourages youth to pursue their athletic dreams because of the impact it can make on their lives.

"Sports made me a better person," he said. "Being around different people and getting to travel is something I'll never forget, so I definitely encourage the students that way."

ET looks forward to playing with the MCH Bulldogs six-man football team in the fall, after participating in the brief spring season in May.

Matt Rodgers, the athletic director and football coach at MCH, expects ET to quickly become an integral part of the team due to his personality and experience.

"ET comes ready to work and learn every day," Rodgers said. "He has an infectious personality and teammates congregate around him, wanting to be a part of what he is doing. Once he gets accustomed to how the team operates and what's expected of him, he can be a tremendous asset and a great team leader."

Work ethic and passion drive ET, and he hopes to pursue football professionally in the future, a goal he says motivates him even today.

Rodgers recognizes ET's athletic talents and helps him and the rest of the team set goals and work hard to attain them.

"I believe ET can achieve any goal he has so long as he sets a plan and can be honest with himself," he said. "I think he has a great work ethic and personality where anything is possible for him."

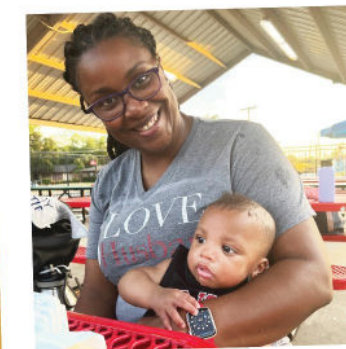
ET's dedication and leadership instills confidence in those around him, and the staff at MCH hopes to continue helping him pursue his goals. Until then, ET is interested in clothing design and also hopes to try his hand at comedy, per his friends' suggestions.

With the support of MCH staff and the encouragement and training they provide, ET is heading into a bright future.

"MCH has taught me I can be different from the way I used to be," he said. "People can change. This place is changing me in a really good way."

Summer at MCH

This summer at MCH was full of fun, fellowship and growth! Children, youth and families enjoyed recreational activities across our residential and Family Outreach programs. Youth participated in faith formation camps, volunteer opportunities in the community and service-based mission trips. Outreach staff supported families with a variety of services in communities across Texas and New Mexico.



Thank you for supporting life-changing experiences at MCH throughout the summer.



Celebrating Our Graduates

ASHLEY

TARLETON STATE UNIVERSITY

Ashley graduated in May from Tarleton State University with a bachelor's degree in education. She received a job in the Waco Independent School District and will be teaching fourth grade reading and social studies at Crestview Elementary School.

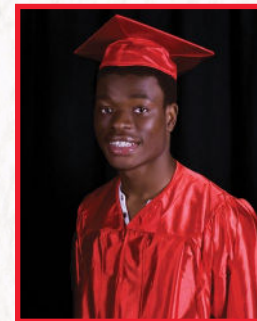


Transition Services

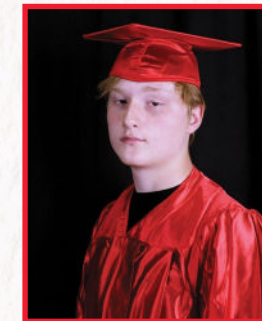
JAELYNE

TARLETON STATE UNIVERSITY

Jaelyne received a bachelor's degree in social work from Tarleton State University in August. He will begin studies at The University of Texas at Arlington in the fall to pursue a master's in social work. During his undergraduate studies, Jaelyne served as an intern with the MCH Admissions team.



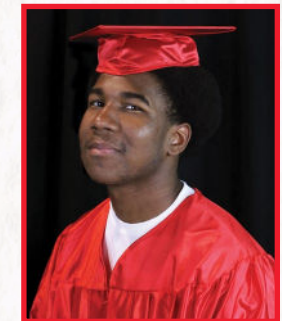
Anthony



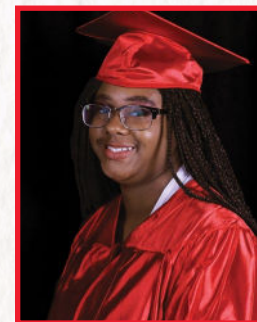
Braydy



Christin



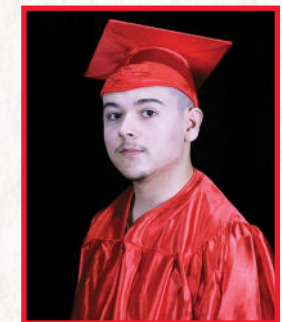
Devion



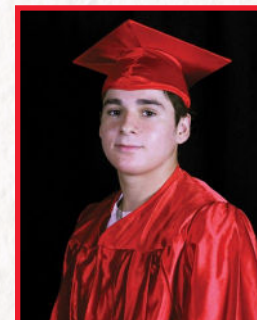
D'Nayjah

Charter School

Congratulations to our students earning high school diplomas this academic year!

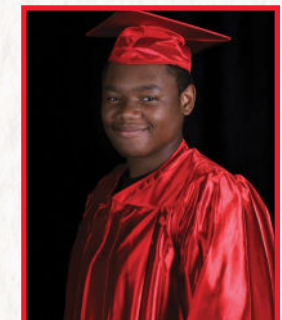


Edson

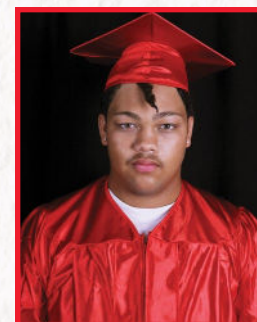


Francisco

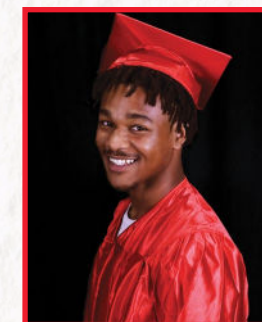
Fifteen* students graduated from the MCH charter school in December 2021 and May 2022. The school, located on the Waco campus, is operated in partnership with The University of Texas—University Charter School system.



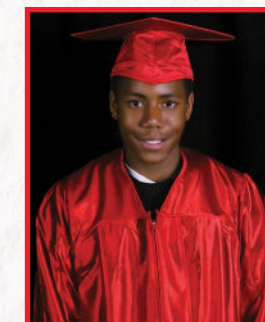
Nathan



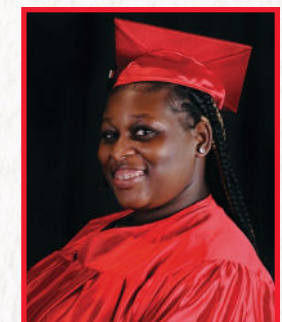
Robert



Samuel**



Steve



Zaniya**

*Not all graduates are pictured.

**graduated in December

TRANSITION SERVICES PROFILE

LEONA

DETERMINED TO GO FAR

BY SARAH BELLAFFIORE

A conversation with Leona, a captivating 25-year-old, is full of inspiration and sprinkled with many life lessons.

Leona was mostly raised by her single mother, a businesswoman, in her native Nigeria. Her mother's business forced Leona to live with different relatives while her mother worked. It was a painful time when she left her home country behind as a teenager, moving to London and eventually to Texas.

"I experienced a lot of trauma growing up in different places where people weren't always kind," Leona shared. "I was not impoverished in any way growing up, but felt like I lost everything after moving away from Nigeria. I was filled with a lot of anger and was very combative."

Leona's mother noticed her behavioral changes and learned about the residential program at Methodist Children's Home from a friend. Her mother arranged a tour of the Waco campus in 2011, and she and Leona agreed MCH was the best place for her at the time.

"Meeting people at MCH who were kind made a huge difference for me," Leona said. "I am grateful for my mother and the staff who supported me because they taught me many lessons. The most important one is I must always be accountable to myself – that meant starting small with my goals in all aspects of my life."

After graduating from high school in 2015, Leona attended Blinn College and then transferred to the University of Houston, where she graduated cum laude in 2019 with a bachelor's degree in psychology. Driven by her passion to help others, Leona returned to school and recently earned a bachelor's degree in nursing from Texas A&M University – Corpus Christi. Upon passing her board certification exams, she will serve as a psychiatric nurse at Children's Healthcare of Atlanta.

The MCH Transition Services (TS) department continues to assist Leona in her educational career through case management and scholarship funds.

"I'm sure my financial debt was cut nearly in half because of the support MCH provided me," Leona said.

"Leona has a plan and she's not going to stop until she meets her goals," said Alyssa Lopez, Leona's TS case manager. "I know she's not done growing and will likely want to take on a different adventure later in life. I know she will go far."

Leona's impressive educational career matches her grit. She admits her path has not been easy. At one point, Leona was diagnosed with anxiety induced depersonalization and experienced hard times of depression and anxiety.

"A psych nurse actually taught me how to cope with my depression and anxiety while I was in college," Leona shared. "Studying psychology in school actually helped me heal – so has my journey with God. It has brought me so much peace and I give more grace to myself. I never thought I'd be the person I am today."

Leona believes her path toward success boils down to two main virtues.

"Determination and self-belief will take you far," Leona said. "Earlier in my life, people judged me because of who I was. But I didn't limit myself. I didn't allow their perspectives to determine how I navigated my path forward."

"If you believe in yourself, there is nothing you can't do," she added. "When you remember your 'why,' it is never too late to try. My life is changed. If I can do it, others can too."

Leona has her sights set on a doctoral degree, after which she hopes to open her own practice to "help others break the cycle of trauma," she said. She also wants to build a strong, flourishing home for her future family.

"I want to be present in my children's lives," Leona said. "I want to create a home where they can be innocent and have a normal life. I also look forward to giving back to MCH as an alumna! I am so grateful for everything MCH has done for me. I am where I am because of this ministry."

DEVELOPMENT NEWS

SUMMER CONFERENCES

After the COVID-19 pandemic disrupted the in-person summer United Methodist Conferences in Texas and New Mexico last year, members of the MCH Development team and other staff enjoyed sharing the message of MCH with friends and supporters, face to face. MCH hosted luncheons at several conferences where pastors and laypersons attending the conferences heard stories of how God is moving through the ministry of MCH.



A SEASON OF JOY!

MCH is grateful for the faithfulness of generous benefactors who make contributions to ensure the children and families we serve experience a joyful Christmas.

As fall approaches, MCH is preparing to share about several exciting ways to give during the Christmas season. The annual Christmas Offering, Secret Santa program and other opportunities can help MCH make Christmas memorable. Please consider inviting a speaker this season to share the story of MCH with church groups, congregations or community organizations, in addition to distributing Christmas Offering brochures to church members.

Generosity during the Christmas season accounts for 50 percent of annual donations. To learn more about ways your church can share the story of MCH this Christmas, contact the Development department at Development@MCH.org or call 1-800-853-1272.



TOP 20 CHURCHES FOR DIRECT GIFTS AND TOTAL GIVING IN 2021

DIRECT GIFTS

Offerings and donations received directly from churches.

- | | |
|-----------------------------|--------------------------|
| 1. Kingwood UMC | 11. Matador UMC |
| 2. First UMC – Grapevine | 12. First UMC – Odessa |
| 3. First UMC – Center | 13. Salado UMC |
| 4. Marvin UMC – Tyler | 14. Wheelock UMC |
| 5. Coker UMC – San Antonio | 15. First UMC La Grange |
| 6. Coahoma UMC | 16. First UMC Cameron |
| 7. First UMC – Rockwall | 17. First UMC Waskom |
| 8. First UMC – Mansfield | 18. First UMC Fort Worth |
| 9. Lakeside UMC – Streetman | 19. Emmanuel UMC El Paso |
| 10. The Woodlands UMC | 20. First UMC Winona |

TOTAL GIVING

Direct gifts from churches plus church credit requests from individual donations.

- | | |
|---|-----------------------------------|
| 1. Salado UMC | 11. First UMC – Richardson |
| 2. First UMC – Big Spring | 12. First UMC – Center |
| 3. Kingwood UMC | 13. First UMC – Fort Worth |
| 4. Marvin UMC – Tyler | 14. Coker UMC – San Antonio |
| 5. First UMC – Rockwall | 15. First UMC – Bronte |
| 6. Lakewood UMC – Houston | 16. Trinity UMC – Arlington |
| 7. First UMC – Grapevine | 17. First UMC – Lockney |
| 8. First UMC – Marshall | 18. St. Luke's UMC – Midland |
| 9. Christ Church United Methodist – The Woodlands | 19. First UMC – Weatherford |
| 10. Highland Park UMC – Dallas | 20. Travis Park UMC – San Antonio |

THANK YOU FOR YOUR CONTINUED SUPPORT!

■ MCH SUPPORTS NEW WACO SAFEHOUSE

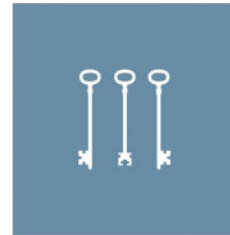
The Waco City Council approved permits for the Reagan House, a home offering refuge for teenage victims of sex trafficking and exploitation. MCH President and CEO Trey Oakley spoke in support of the safehouse at the City Council meeting where the project was approved.

The Reagan House is a project of Unbound Waco, a church-affiliated organization which launched in 2012 to address issues related to human trafficking. The nonprofit has chapters around the United States and in several countries. The goal for the Reagan House is to provide an evidence-based, trauma-informed home

where girls who have been trafficked can experience safety and nurturing while accessing resources for recovery.

"MCH is equipped to come alongside and support the Reagan House with resources and expertise," Oakley said. "This is a great demonstration of community partners rallying together to act on behalf of vulnerable children and youth in need of healing."

Oakley said MCH has regularly provided training to Unbound staff on trauma-informed therapy and added that youth from the Reagan House will be able to attend school at the MCH charter school. •



UNBOUNDNOW
WACO

■ DAY STUDENTS VOLUNTEER AT LOCAL NONPROFIT

A group of school support staff and University of Texas-University Charter School (UT-UCS) day students volunteered throughout the summer at Caritas of Waco. The group helped prepare box fans to be delivered to those in need in the community.

"Caritas was so appreciative of our students and staff volunteering to help," said Amy Grisham, director of school support. "It was a good bonding time for students and staff and was so rewarding to serve others in our community." •



▲ Day Students pack boxes of food for distribution to community members in need.

▲ MCH Day Students and support staff volunteer at Caritas in Waco, a nonprofit committed to addressing needs of poverty.



■ EL PASO FAMILY OUTREACH PARTICIPATES IN 'CAMP ABILITY'

The El Paso MCH Family Outreach team participated in the weeklong "Camp Ability," which serves to empower teens and young adults with disabilities in the El Paso community.

Members of the El Paso team took turns attending each day of the camp, assisting with games, crafts and activities. MCH joined with the Partners Resource Network and other local agencies to provide support for the camp. MCH has served Camp Ability in years past and plans to continue their involvement into the future.

Bonnie Perez Ramirez, project director for the Partners Resource Network, said of the El Paso staff: "How they all interact with the campers and team captains made them feel so much at ease and

comfortable being their authentic selves. It is refreshing to see a team so eager to participate in the ice breakers, team building activities and especially our day at the zoo!"

Director of Family Outreach Zahire Gonzalez-Villa served as part of the planning committee for the camp.

"We are always looking for ways to make the camp even better each year," she said. "It really is a wonderful experience and I am looking forward to next year!" •

Staff from the El Paso Outreach office partner with other community organizations to serve teens and adults with disabilities.



■ MCH PROMOTES SERVICE

The MCH Board of Directors approved a new benefit giving employees eight hours of paid time off annually to volunteer in the community.

"I believe we are better when we serve others," said MCH President and CEO Trey Oakley. "Service is more than what we do for those in our care at MCH. It is the model we want to be known for as Methodist Children's Home in our communities."

Employees will have options to serve at local nonprofit organizations, schools, churches or during a meaningful holiday, Oakley said. •

GIFTS OF HONOR AND MEMORIAL GIFTS

GIFTS MADE FROM APRIL THROUGH JUNE 2022

HONORARIUMS

Laura Leskoven Ackerman
Les and Karen Leskoven

Mrs. Marianne Anderson
Joe and Jami Lovelady

The Birth of Bo Bento
Alice Sappington

Ladies of Betram First UMC
First UMC, Bertram, TX

Myra Blackerly’s 90th Birthday
Peggy Osborne

Pastor Nicole Boddie
Roxanne Whiteley

Mrs. Mitzi Boeselt
Virginia Adcock

Tana Beth Bradshaw’s Birthday
Anonymous

**Breakfast Bible Study Group
First UMC, Corsicana, TX**
Les and Karen Leskoven

Rev. Lorraine Brown
Totsy Cunningham

Anna Katherine Rowell Byrd’s 100th Birthday
Christine, Cindy and Mike Williams

Mary Jane Caudill
Lisa Schumacher

Carroll Choate
Julie and Maro Johnson

**Congregation of First UMC
Corsicana**
Les and Karen Leskoven

Ben Cooner
Caren Easterling

Jonathan Cordova and family
Anonymous

Dr. Jack Kyle Daniels
Paul and Gayle Calmes
James and Linda Hardwick

Ruth Ann Davis
Bob Lenz and Beth Davis Lenz

**Epworth Sunday School Class
Members**
Epworth Sunday School Class
First UMC, Big Spring, TX

Cindy Parks Gill
Judy and Don Parks

Shawna Graham’s Birthday
Anonymous

Charlotte Gump
Robert M.Gump

Bill Hindman
Barbara Neilson McGraw

Ed and Susan Hinson
Bob and Rubyetta Cain

Lois and Bill Horton’s 75th Birthdays
Lori and Ray Day

Robert and Sandra Houghton
Randy and Rhonda Sides

Howard Home Legacy
Charles and Ann Cantrell
Jack and Karen Faubion
Joe and Belinda Faubion
Chip and Debbie Howard
Jack and Linda Tinsley

Rev. Byron Jarratt’s Birthday
Betty Rosenbaum

Irma Jarratt
Betty J. Rosenbaum

Joy Jones
Emily and R.J. Claassen

Pastor Mike and Dianne Kerzee
Les and Karen Leskoven

Kelly E. Lawson
Shannon McCuaig

Les Leskoven
Laura and Nick Ackerman
Cathi Davis
Kelly E. Lawson
Seedhouse Creative, Waco, TX

Vernon and Jewel Lockridge
Les and Karen Leskoven

Dorothy Metting
Pat Smith

Debi Moses
Leslie and Jim Randolph

Barbara Murphy
Kim Murphy
Laura Frederick and Sean Murphy

Judge and Mrs. W.H. Nunn
Mr. and Mrs. Kirk McCarter

Trey and Karen Oakley
Mr.and Mrs. John L. Howard
Les and Karen Leskoven

Denise Ondrey
Les and Karen Leskoven

Maggie Pellicore
Les and Karen Leskoven

Sandy Robinson’s Birthday
John Porter

Stefani Smith
A.A. Schellenberg, Jr.

Patricia Speer’s Birthday
Anonymous

Marion Stafford’s 90th Birthday
Patricia Mitchell

Joe Steele
Pathfinders Sunday School Class
First UMC, Childress, TX

Tim Stites
Les Leskoven

Pat Taylor
Nora Loughrey

Steve Tinkle
Wendi Summers

Tobin Park Fathers
United Methodist Women
Tobin Park UMC, El Paso, TX

United Methodist Men
First UMC, Center, TX

United Methodist Men
St. Marks UMC, Marshall, TX

John and Lisa Updegrove
Les and Karen Leskoven

Sherry Vaughan
Anonymous

Robert D. Wilhite
Lori Wilhite

**Pastor Wayne Williams
Renew Church Waco**
Anonymous

**Men of Waples UMC
Father’s Day**
Women of Waples, Waples UMC
Granbury, TX

MEMORIALS

Arnold and Wanda Alberts
Gary and Mary Alberts

Nevelyn Crawford Alexander
Anonymous
Kathryn Alexander
Mary and Gary Atchley
Jared Bishop
Arledge Brashers
Sondra Cunningham
Cathy David
The Doxology Community Group
Fort Worth, TX
Carol Funk
Margaret Gressett
Guaranty Bank and Trust Family
Mt Pleasant, TX
Kirk and Amy Lee
Barbara Malin
Polli Doss Satterwhite
Art and Jane Scharlach
Jean and Rod Sprecher

Ann Melton Allred
Charles and Carol Brown

Joel and Imogene Arnold
Philip Arnold

Norma Jo Barnhart
Marian McDonald

Opal Chloe Barr
Anonymous

Betty Bartek
Timothy and Joyce Woodlock

Ida “Pat” Bergmann House
Jeff and Paula Walley

Milzey Oran “Milz” Bickley
Cindy Huffman

Norbert James “Norb” Blohowiak
Gloria Gillenwaters Peck

Corey D. Blubaugh
Bob and Lynda Blubaugh

David Bruce Bonorden
Thomas and Hallie Bonorden

Barbara Jan (Easter) Bowker
Leslie and Candy Mallonee

Royce Brownfield
Mary Lois Irvin

Carolyn Bruns
William and Jill Weller

Harold E. Bruns
Thomas and Theresa Bruns

Linda Jean Burney
Mr. and Mrs. Roy Seaberg

Louise “Honey” Burson
Justin Fitts

Mrs. Connie Caldwell
Mrs. Dorothy Ann Metting

Phyllis Adele Carey
Mrs. Jami Lovelady

Alice Jean (Snyder) Carter
Maurice and Jensina Sheppard

Frances and Julian Caswell
Judith Caswell

Dr. Lindley Cates
Dawn Dose
Peggy and Mary Johnson
Vera E. Johnson
Tammy and Duane Morita

Jane Levy Christie
Kathryn Janet Cavitt

Troy Clenard Clinesmith
Mr. and Mrs. Monte W. Smith

Billy Dean “Bill” Conner, Sr.
Steve and Meda Beaird

Larry Bob Conway
Linda Conway

Clara “Jean” Cummings
Charles and Pat Carpenter

Ruth Evelyn Daniels
Paul and Gayle Calmes
James and Linda Hardwick

Armistead Davis
Bob Lenz and Beth Davis Lenz

Rachel Davis
Barbara L. Berry

Richard Henry Davis
Kay W. Davis

Betty Jane Dempsey
Larry McCord

Aurora Michelle Drummond
Fred Barhydt

John Charles Edwards
Donna Edwards

David Ray Finney
Jeff and Melanie Royal

David “Benton” Ford
Ford & Son, Inc., Grand Prairie, TX

Rev. John Travis Franklin
Laurie Franklin

Harry L. Frankson
Mrs. C.J. Hollas

Hazel Gabbard
Jack D. Daniell

Linda Diane “Honey” Garcia
Terelyn Garlington

Sandy Smith Garner
Creo Lynne Smith

Danel Allen Gillard
Doris Gillard

Martha Ann (Wall) Gillispie
Debbie Daugherty

Dr. William V. Ginn, Jr.
Eleanor Ginn

Sharon Gayle (Rodgers) Goble
Gary and Cheryl Rodgers

Mary Joycette Hamrick
J.D. and E.A. Higgins
Jerry and Cindy Parker
Marny Tackett
Sherrie Vandiver

John Hardy, Jr.
Rev. and Mrs. Kenneth Byrd

Bonnie Ruth Hatchell
Jack and Linda Tinsley

William Earl “Bill” Haynie
Mr. and Mrs. Roy Seaberg

John H. Hensley
Thomas and Theresa Bruns

Clarence Leroy Hidy
Lois and Bill Horton

Gloria (Warren) Hill
George and Elaine Roberson

George Lowrance Hodge
Totsy Cunningham

Margaret Sue Hopper
R.D. Hopper

Wanda Faye Horn
Ralph and Bobbie Detwiler

Dorothy Houghton
Connie McMillan

Horace R. “Skeet” Jameson
Chelsea Read

Bennie Lee Jarratt
Betty Rosenbaum

Carol Johnston
Ballard Family

Mitchell R. Jones
Thomas and Janelle Brinck

Dan Jordan
Jane Jordan

Dick and Ellie Kenyon
Daniel and Karen Jedlicka
Mr. and Mrs. Daniel Kent
Trey and Karen Oakley

Kathi King
Robert D. King

James and Marion Kisling
David and Rosemary Kisling

Mildred Krolczyk
Durkee United Methodist Women
Durkee UMC, Houston, TX

William C. Lane
George and Elaine Roberson

Jimmy W. Leskoven
Carolyn L. Pena

Mrs. Sandy Lewis
Joe and Jami Lovelady

Libby Manning Garcia
Pete and Darlene Smith

Kimberly Duderstadt Martens
Ken and Carolyn Duderstadt

Mary Lou (Young) Massengale
Thomas and Revae Pool

Robert Mayes
Grady and Kim Newton

Allen Delmas McCormick
The Larry McCormick Family

Allan McCurdy
Barbara A. Adair

Weldon Maurice “Joe” McGraw
Barbara Neilson McGraw

Mark Steve Meek
Glenda Ruth Irvine

David Metting
Rev. and Mrs. Kenneth Byrd

Curtis Williams Mewbourne
Alliance Equities Corporation
Overland Park, KS
Edward Bandy
Mike and Debbie Burke
Charney Brown, LLC, Tulsa, OK
Chi Energy, Inc., Midland, TX
Darden Family Charitable
Foundation, Tulsa, OK
Diamondback Energy and Rattler
Oklahoma City, OK
Mary Beth Fitzgerald
The Patrick Fitzgerald Family
Jody and Christy Gibson
David and Donna Gift
Beth and Andy Guinn

The Havens-John, Terri, Prentiss
Davis and Mallette
Erik and Kristi Hoover
Ronnie and Sherry Howell
MS Directional, Whitehouse, TX
Bob and Odette Mace
Nova Mud, Inc., Hobbs, NM
Permian Basin Petroleum
Association, Midland, TX
Rick Poland
Jackie and Al Richey
Peggy Ratcliffe Roe
Superior Pipeline Company,
Tulsa, OK
Tara and John Swords
Texas Oil & Gas Association
Austin, TX
Brent and Esmeralda Thurman
Western Midstream Partners, LP
The Woodlands, TX

Mickey M. Mills
Amanda Smith

Dee Mitchell
Mary B. Mitchell Ellis

Mary A. Morehead
Brian Morehead

Charles Oscar Morrison
Mrs. Lee Seabrooke

Robert Lee Neelley
Leigh Neelley Boatman
Gerry Hoots

Geraldine “Geri” Orr
M.C. Benavides
Janet and John Birkhoff
Cheryl O. Chase
Sandra Dehn
Mary Ellis
Kathy K. Hays
Karen McCracken
Karen Reynolds
Myrene and Steve Sanders
Zanda and Chuck Seaberg
Debbie Wheelan

Dr. Charlie George Orsak
Joe and Jami Lovelady

Toby Ryan Osborn
Steve and Norma Runyon

Stephen D. Patrick
Kay Furman

Milton H. Ramsey
Trent Croker

Paula Knowles Ray
Virginia P. Lea and Family
Johnny Lennon Family

Donald Texas Reed
Jim and Kim Heckard

Ted Reed
Joe and Jami Lovelady

Kent Leon Rideout
Lonnie and Nancy McIntosh

Mildred and Elmer Rodgers
Gary and Cheryl Rodgers

Frances Jena Rogers
James F. Rogers

Barbara Craig Ross
Anonymous

Cannon “Brother” Hayes Rush
Anonymous
Rick and Tammy Adair
Christy Baumann
Susan and Lance Beatty
Jennifer Benton
Ashley, Cody, Brooke
and Blake Blossman
Pat and David Breeland
Jason, Angel and Lily Breton
Richard and Janie Brewer
Harvey and Betty Brown
Elise and Gary Magee
McLennan County Junior
Livestock Show, Waco, TX
Julie and Doug Mitchell
Trey and Karen Oakley
Sydney Seaver
Kelsey Snyder
Jake and Jenny Swatek
Russ and Patsy Swatek
Kristy Turner
Danny and Penny Vannatta
Jody and Cathy Wood

Our loved ones
Richard and Ann Schiltz

Peggy Jean Robinson Schmeltekopf
Ingram Family Foundation
Patricia R. Robinson
Rebecca Robinson, Gina Horner
and Family

Mr. and Mrs. James A. Schmidt
Jimmy Douglas Schmidt

John Patterson “Pat” Shepard
Barry Evans

Helen Louise (Kirk) Sims
Ruth L. Wilkins

Mrs. Agnes Smith
Jimmy Douglas Schmidt

Bill P. Smith
Reesa Roberts Smith

Nilah Jo (Hill) Smith
Virginia H. Ziemer

Curtis Cullen Smith, Jr.
Julie and Doug Mitchell
Trey and Karen Oakley
Charles and Jane Szalkowski

O.B. Smith
Creo Lynne Smith

Aaron Smuts
Nancy Taylor

Marie Solomon
J.B. Sisler

Julian Stafford
Carol Stafford

Claire Ann Stegman
Charlie and Linda Peterson

Billy Wade Stofle
Charles and Carol Brown

Richard West “Dick” Stowers
Steven and Tere Garlington

Jeff Taylor
Barry Evans

Elton (Rose) Fillingim Teeters
Glenda Ruth Irvine

Billy Bob Thomason
Donna Thomason

Christopher Wayne Thomason
Dan and Kristine Thomason

Timothy Tomaino
Kathleen Testa

Mark Trautmann
Anonymous

Ms. Vernell Turner
Durkee United Methodist Women
Durkee UMC, Houston, TX

Jimmy and Susan Twitty
Steve and Sharon Petti

Bobby Vance
Arledge Brashers
Debbie Daugherty
Pam Vance Edgerley
Sue Ferguson
Louis Gillispie
Penny Halpenny
Les and Karen Leskoven
Trey and Karen Oakley
Tim and Joyce Woodlock

Delores Jean Vickers
Dale Vickers

Dora S. Villarreal
Mr. and Mrs. Rolando S. Villarreal

Paul Howard Wells
Greg and Robin Pruitt

Sandy Wells
Dub and Rebecca Bowden
Narramore

Lily Marguerite White
Tere Garlington

Dr. Robert “Bob” Edd Whitson
Ronnie D. McCormick

Cleo and Herbert Wiley
Gary and Cheryl Rodgers

James S. Wilkins
Ruth L. Wilkins

Cliff Wilkinson
Hilda Hahn

Beverly Joy Williams
Pete and Darlene Smith

Nancy Williams
Anonymous

Carol Winston
Chuck Winston

Joyce Maurine Winston
Patricia Tausch

Douglas Wofford
Patsye Parker

Vivian Charlene Woods
C.T. and Mary Ann Kutschke

Robert Burl Yowell
Joe and Katherine Pitts



FRIDAY, JULY 1, 2022

\$500K GIVING DAY

A ONE-DAY MATCHING GIFT CHALLENGE

*Thanks to your generosity,
we surpassed our goal!*

*\$734,996.49
raised!*

